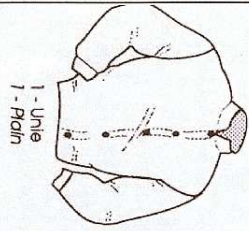
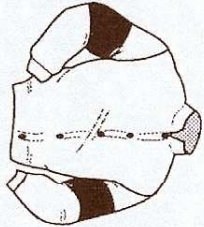


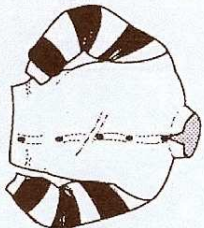
MANCHES - SLEEVES



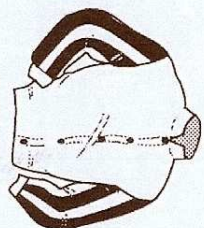
1 - Unie
1 - Plain



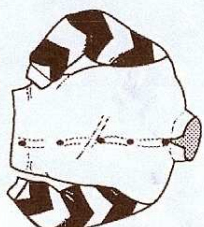
2 - Bassards
2 - Armiers



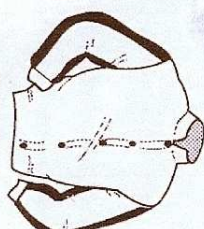
3 - Cerclees
3 - Hooped



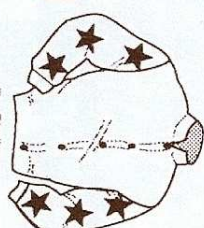
4 - Rayees
4 - Stiped



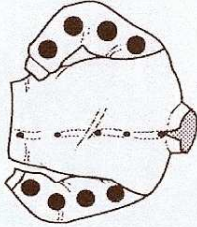
5 - Chevromees
5 - Chevrons



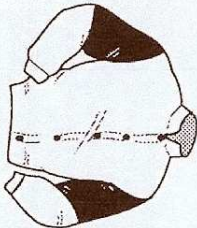
6 - Coutures
6 - Seams



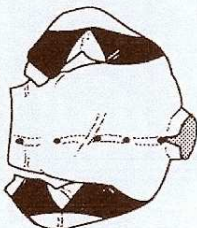
7 - Etoiles
7 - Stars



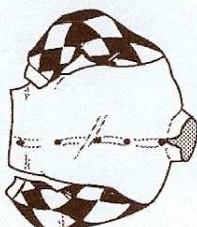
8 - Pois
8 - Spots



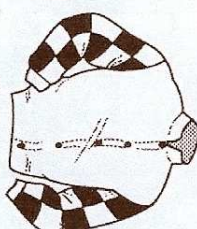
9 - Mi
9 - Halved



10 - Diabolo
10 - Diabolo



11 - Losanges
11 - Diamonds



12 - Damiers
12 - Checks

TOQUES - CAP



1 - Unie
1 - Plain



2 - Cerclees
2 - Hooped



3 - Rayees
3 - Stiped



4 - Damiers
4 - Checks



5 - Pois
5 - Spots



6 - Ecartelee
6 - Quartered



7 - Etoile
7 - Star



8 - Losange
8 - Diamond



9 - Etoiles
9 - Stars



10 - Losanges
10 - Diamonds